

Circular Economy & End Market Development



Circular Colorado

Board of Directors

Adam Hill – Direct Polymers

Michael Utz – Container Retrievers and Ripple Glass

Jenifer Freeman – Swire Coca-Cola

Wendy Fauth – GFL Environmental

Alice Havill – Breakthrough Energy

Rural seat - recruiting

Laurie Johnson

Founder & CEO

Eric Heyboer

Chief Operating Officer

Amy Randell

Chief Business Officer



What We Do

Collections



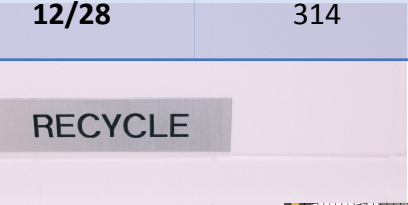
Develop End Markets & Circular Economies



Material Collection – Downtown Denver

New access and improved programs for Multifamily,
Commercial and Office Buildings

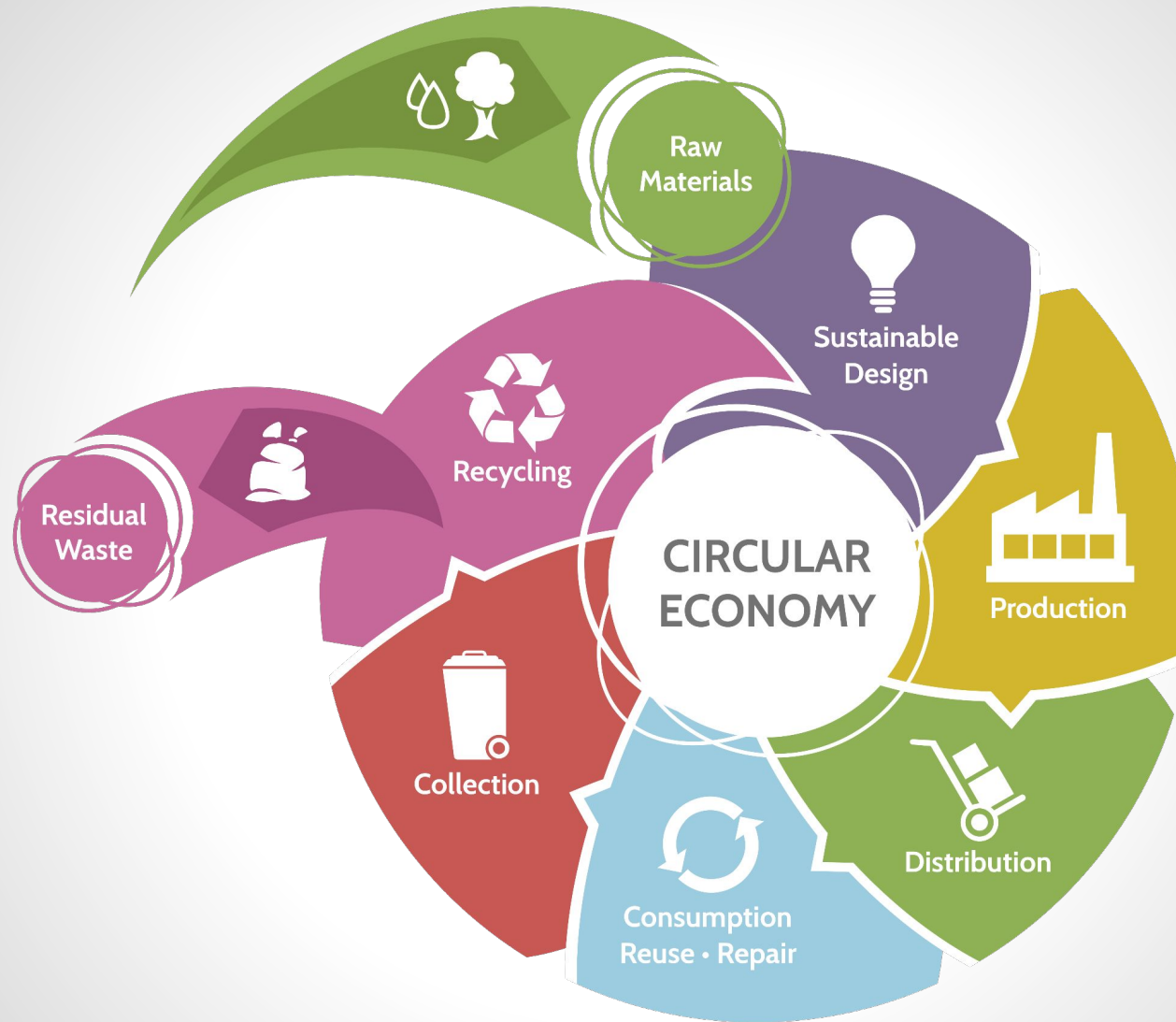
Collection Date	Cardboard (lbs)	Containers (lbs)	Drop Offs (Door Access)	Distinct Users	Household Total
12/1	0	0	0	0	0
12/7	285	124	75	39	52
12/14	190	149	64	44	65
12/21	222	307	87	54	81
12/28	314	274	77	44	98



Compile data on
available inputs.
Virgin/recovered/bypro
ducts

Expand
processing
infrastructure

Methods and systems
for capturing clean
material



Retain ownership
Design for recycling
Product life extension

Manufacturing uses
recycled content inputs.
Attract manufacturers
to Colorado

Trucking lanes.
Distribution centers.

Promote reuse/
repair



Responsible products for economic growth and environmental responsibility

RETAIN PRODUCT OWNERSHIP

Producer rents or leases its product to the customer rather than selling it. The producer is responsible for products when customer finishes with them

PRODUCT LIFE EXTENSION

Producer designs products to last longer therefore minimizing need to replace them

DESIGN FOR RECYCLING

Producer designs products and manufacturing processes to maximize recoverability of the materials involved for use in new products

TRANSPORTATION/DISTRIBUTION IS KEY

Colorado Springs to See Building of New and Massive Distribution Center

4/25/2022

[0 Comments](#)



Plans are in the making for the construction of a just over 265,000 square foot distribution center that will go on the east side of Colorado Springs.

Colorado-based Triumph Capital Group purchased the land for the project for \$4.2 million.

Slated to go up on just under 18 acres of land near the intersection of N. Powers Boulevard and E. Platte Avenue, the development will be designed to cater to a multi-tenant clientele.

Triumph Capital specializes in industrial warehouses and prime logistics space across the country, enjoying a particularly strong presence in the Midwest and South. The company advertises itself as developing such facilities in “urban infill and emerging regional distribution locations.”

CDL Driver Shortage

Lack of established trucking
lanes in Colorado



Focus on Data

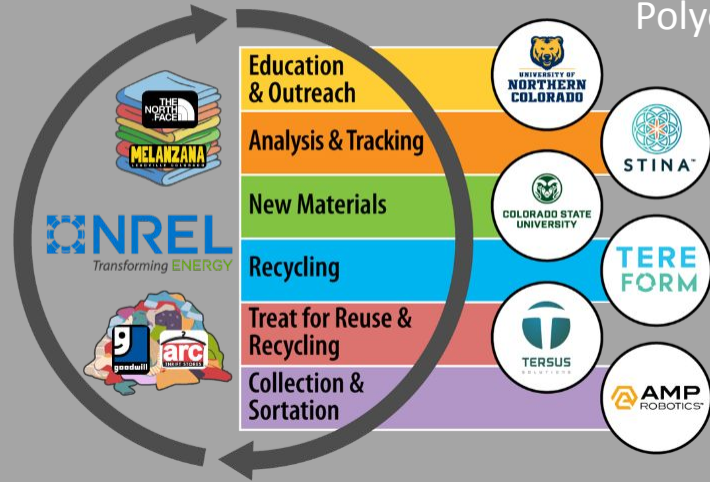
Need good and accurate data about available materials to attract end market solutions to Colorado

- Virgin materials
- Recyclables
- Byproducts from processing and manufacturing

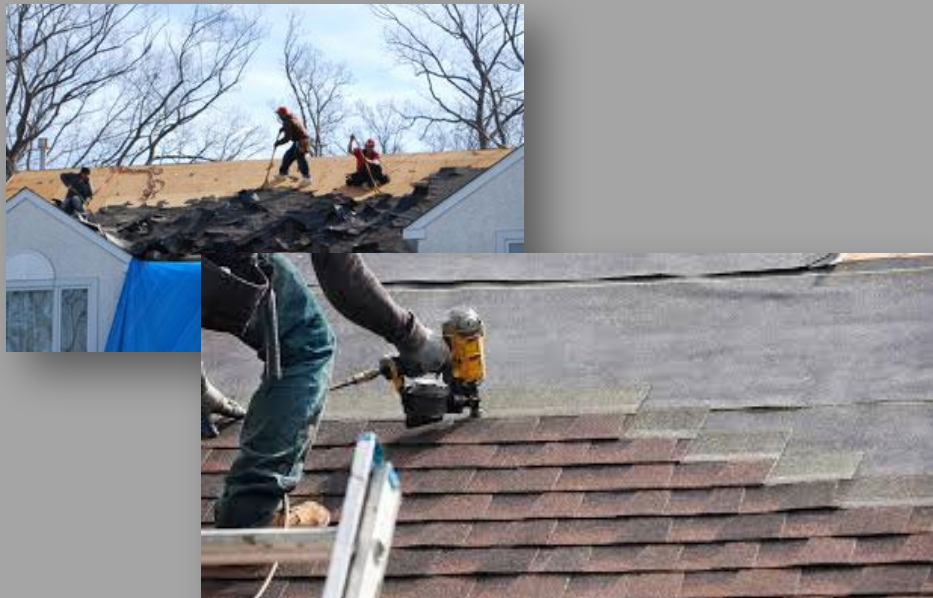


Colorado Textiles Circulator

Polyester to polyester



Shingle to Shingle



Keeping recycled plastics
in Colorado



CURRENT PROJECTS

AFFILIATED WITH

CIRCULAR COLORADO

WHERE DO YOU FIT IN?



Facilitated workgroups

Rural Colorado:
Aggregating tons to
support transportation
and critical materials

Sector Roles:
Manufacturing,
Transportation,
Processors

Partner Roles:
Nonprofits,
Government, Higher Ed

All groups will also submit their opinion on three most critical materials in need of a new end market or an expansion of a current market.

Contact Us

laurie@circularcolorado.org

eric@circularcolorado.org

amy@circularcolorado.org

contact
us